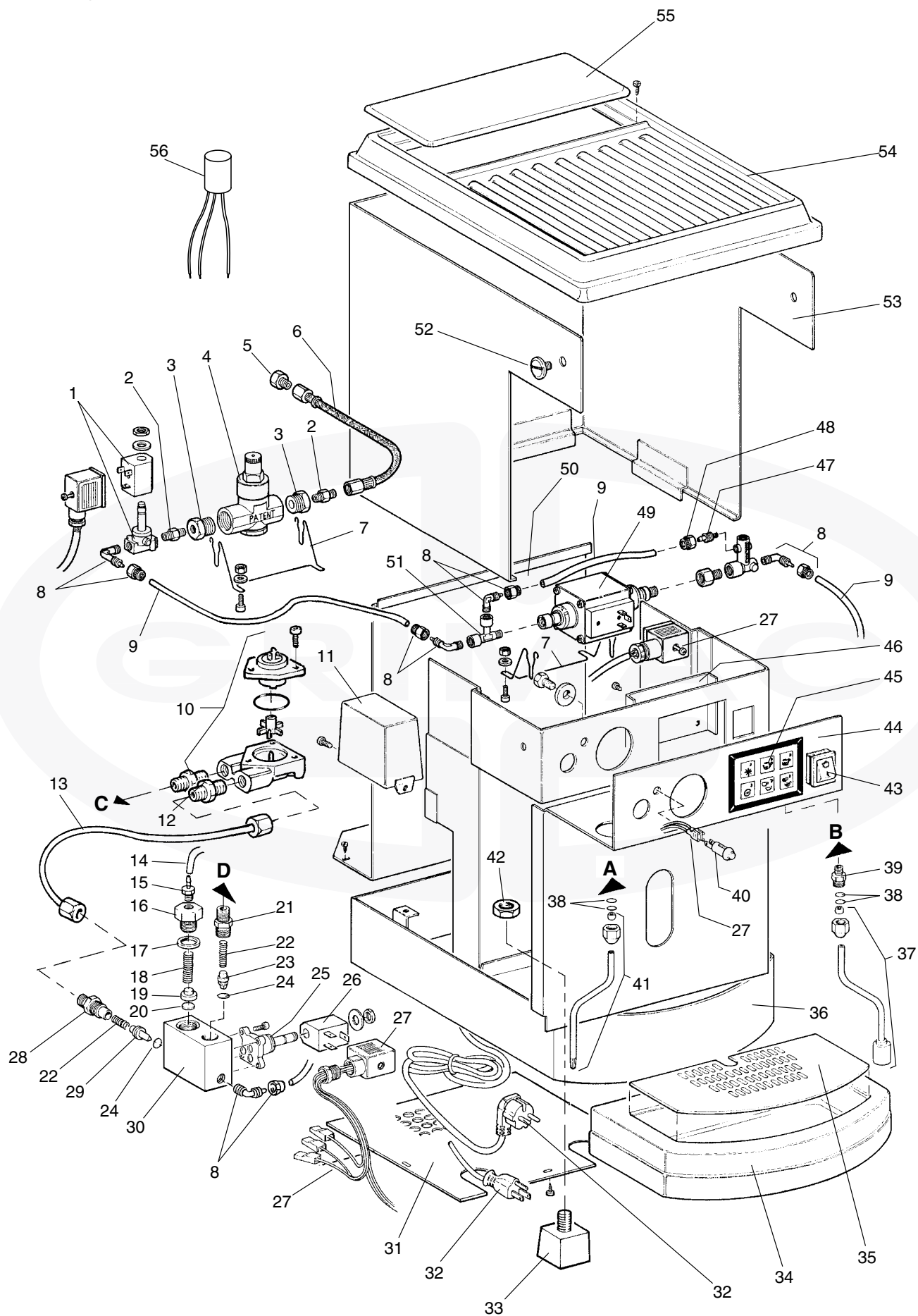


Catalogo ricambi per *Spare parts catalogue for* **LA UNO**

REV. 00-118-03-01UK

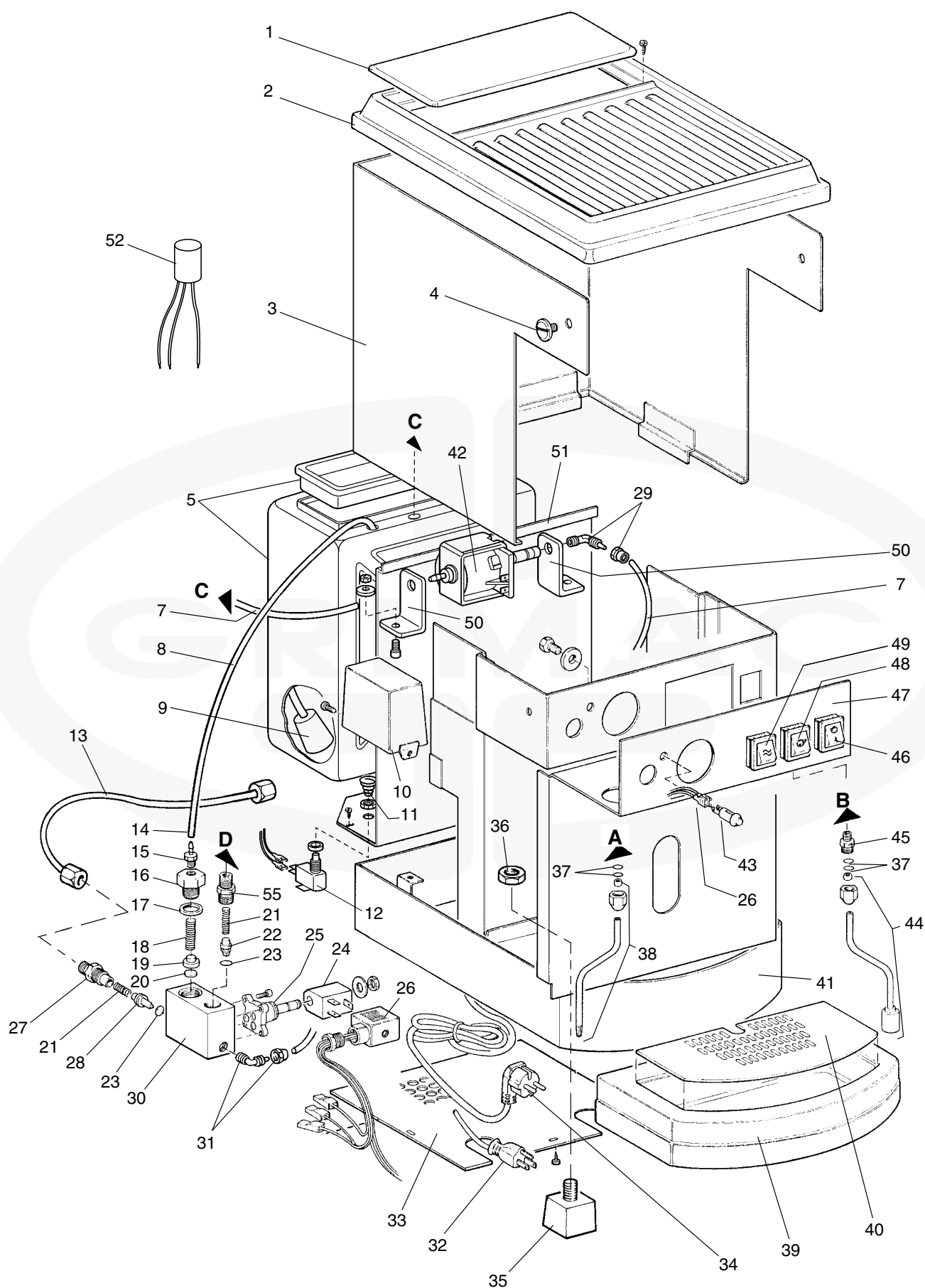




POS.	CODE	DESCRIPTION
1	V190 MG006	230V SOLENOID VALVE 115V SOLENOID VALVE
2	MG137	1/8 - 1/8 M UNION TEE
3	MG156	1/2 - 1/8 M-F ADAPTER
4	V130	PRESSURE REDUCER
5	MG186	3/8-1/8 M-F ADAPTER
6	C334	1/8 F-F STAINLESS FLEX TUBE
7	MG046	WIRE SUPPORT
8	MG276	1/8" Ø6 NOSEPIECE ELBOW UNION
9	MG204	TEFLON PIPE Ø 6x4 (per meter)
10	V243	DOSING FAN
11	MG282 MG283	230V ELECTRONIC DOSING 115V ELECTRONIC DOSING
12	MG136	1/4 - 1/4 M NIPPLES
13	MG109	Ø 6 COPPER EXCHANGER PIPE
14	MG155	SILICONE PIPE Ø 4x7 (per meter)
15	MG163	1/8 Ø 6 RUBBER BUFFER HOLDER
16	MG103	1/2" UNION EXPANSION VALVE
17	VBM021	TEFLON DRAIN GASKET
18	F098	DRAIN SPRING
19	FS217	EXPANSION VALVE GASKET HOLDER
20	F027	CHECK VALVE GASKET
21	MG102	SELF-ADJUSTING LEVEL NIPPLES
22	FS214	CHECK VALVE SPRING
23	MG195	SELF-ADJUSTING LEVEL CHECK VALVE
24	F067	10017 VYTON O-RING
25	MG007	LEVEL SOLENOID VALVE BODY
26	G131 G356UL	230V COIL 115V COIL
27	MG096 E MG097E	ELE WIRING CE COMPLIANT WATER MAINS/RESERVOIR ELE WIRING USA COMPLIANT WATER MAINS/RESERVOIR

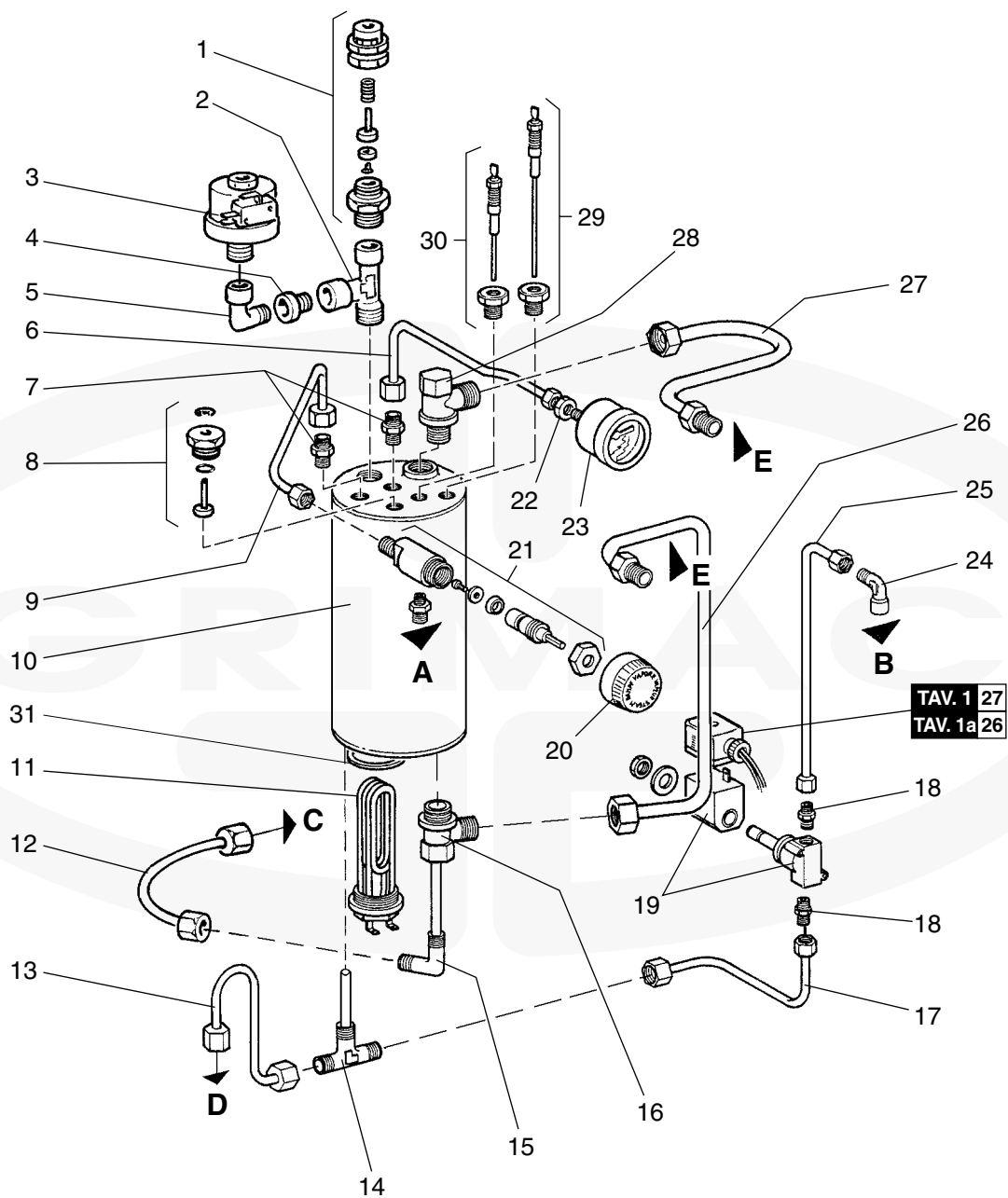
POS.	CODE	DESCRIPTION
28	MG101	INTAKE WATER NIPPLE
29	F149	CHECK VALVE
30	MG100	MINI GRIMAC BRASS DISTRIBUTOR
31	MG194	MINI GRIMAC PROTECTION GRID
32	GG3060 GG3065	SUPPLY CABLE CE SUPPLY CABLE UL-ETL
33	F602	ADJUSTABLE FOOT
34	MG092 MG360	WATER TRAY STAINLESS STEEL DRAIN BASIN (1998 VERS.)
35	MG090 MG361	WATER TRAY GRID TRAY GRID
36	MG089 MG089	PAINTED FRAME PAINTED FRAME (1998 VERS.)
37	MG115	CHROMIUM-PLATED HOT WATER PIPE
38	F024	5.7x1.9 O-RING
39	MG158B	WATER PIPE FITTING NIPPLES
40	MG077	115/230V FIXED PILOT LAMP
41	MG037/1	CHROMIUM-PLATED STEAM PIPE
42	MG049	FOOT SECURING NUT
43	W491	I/O SWITCH
44	MG162E MG162E	STAINLESS ELECTRONICS PANEL STAINLESS ELECTRONICS PANEL (1998 VERS.)
45	MG278	230/115V ELECTRONICS MEMBRANE
46	MG299	CARD STEEL REAR DETENT
47	MG167/1	PUMP BYPASS NIPPLES
48	MG167/2	1/8 RING NUT
49	MG044 MG044/1 MG071 MG072	VIBRATION PUMP 230V MAINS MOD. VIBRATION PUMP 115V MAINS MOD. VIBRATION PUMP 230V RESERVOIR MOD. VIBRATION PUMP 115V RESERVOIR MOD.
50	MG091	SEPARATING PANEL
51	MG133	1/8 F-F-M UNION TEE
52	W430	SIDE SECURING SCREW

POS.	CODE	DESCRIPTION
53	MG052a	STAINLESS STEEL BODY
	MG052r	RED PAINTED BODY
	MG052n	BLACK PAINTED BODY
	MG052b	WHITE PAINTED BODY
	MG052a	STAINLESS STEEL BODY (1998 VERS.)
	MG052r	RED PAINTED BODY (1998 VERS.)
	MG052n	BLACK PAINTED BODY (1998 VERS.)
	MG052b	WHITE PAINTED BODY (1998 VERS.)
54	MG093	UPPER COVER
	MG362	STAINLESS STEEL COVER (1998 VERS.)
	MG363	STAINLESS UPPER GRID (1998 VERS.)
55	MG098	SMALL UPPER COVER
	MG364	STAINLESS SMALL COVER (1998 VERS.)
56	MG308	FILTER

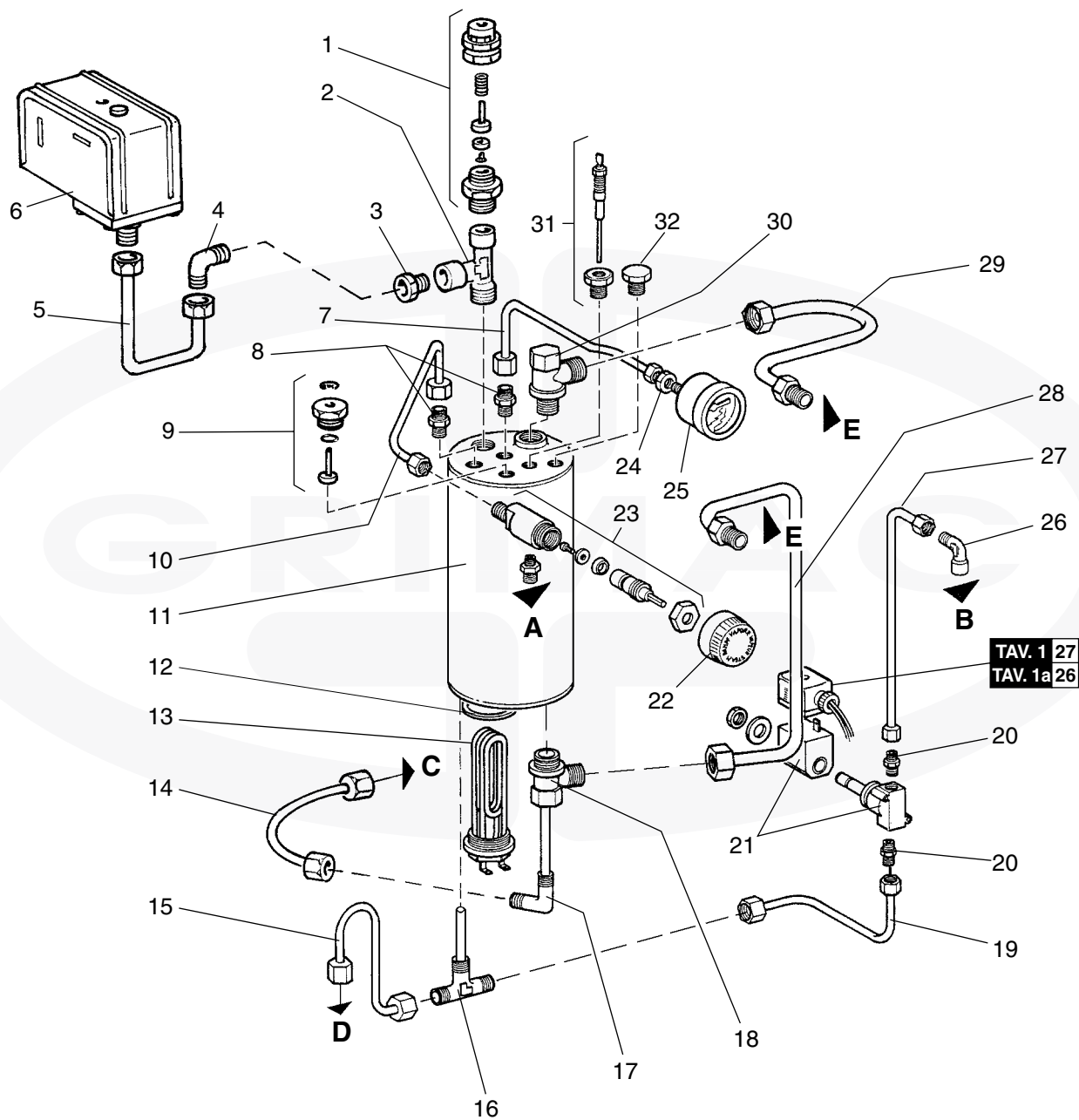


POS.	CODE	DESCRIPTION
1	MG098 MG364	SMALL UPPER COVER STAINLESS STEEL SMALL COVER (1998 VERS.)
2	MG093 MG362 MG363	UPPER COVER STAINLESS STEEL COVER (1998 VERS.) STAINLESS STEEL UPPER GRID (1998 VERS.)
3	MG052a MG052r MG052n MG052b MG052a MG052r MG052n MG052b	STAINLESS STEEL BODY RED PAINTED BODY BLACK PAINTED BODY WHITE PAINTED BODY STAINLESS STEEL BODY (1998 VERS.) RED PAINTED BODY (1998 VERS.) BLACK PAINTED BODY (1998 VERS.) WHITE PAINTED BODY (1998 VERS.)
4	W430	SIDE SECURING SCREW
5	MG018/1	MINI GRIMAC 5 L. TANK
7	MG204	Ø 6x4 TEFLON PIPE (per meter)
8	MG155	Ø 4x7 SILICONE PIPE (per meter)
9	MG180/1	WATER SOFTENER
10	MG307 Z127UL	230V 2-PROBE LEVEL REGULATOR 115V LEVEL REGULATOR
11	MG025/2	SPRING FOR MICROSWITCH
12	MG025/1	MICROSWITCH
13	MG109	Ø 6 COPPER EXCHANGER PIPE
14	MG155	Ø 4x7 SILICONE PIPE (per meter)
15	MG163	1/8 Ø 6 RUBBER BUFFER HOLDER
16	MG103	1/2" UNION EXPANSION VALVE
17	VBM021	TEFLON DRAIN GASKET
18	F098	DRAIN SPRING
19	FS217	EXPANSION VALVE GASKET HOLDER
20	F027	CHECK VALVE GASKET
21	FS214	CHECK VALVE SPRING
22	MG195	SELF ADJUSTING LEVEL CHECK VALVE
23	F067	10017 VYTON O-RING
24	G131 G356UL	230V COIL 115V COIL
25	MG007	LEVEL SOLENOID VALVE BODY
26	MG096 MG097UL	PUL WIRING CE COMPLIANT WATER MAINS/RESERVOIR PUL WIRING USA COMPLIANT WATER MAINS/RESERVOIR

POS.	CODE	DESCRIPTION
27	MG101	INTAKE WATER NIPPLE FOR MINI GRIMAC
28	F149	CHECK VALVE
29	MG276	1/8" Ø 6 NOSEPIECE ELBOW UNION
30	MG100	MINI GRIMAC BRASS DISTRIBUTOR
31	MG276	1/8" Ø 6 NOSEPIECE ELBOW UNION
32	GG3065	SUPPLY CABLE UL-ETL
33	MG194	MINI GRIMAC PROTECTION GRID
34	GG3060	SUPPLY CABLE CE
35	F602	ADJUSTABLE FOOT
36	MG049	FOOT SECURING NUT
37	F024	Ø 5.7x1.9 O-RING
38	MG037/1	CHROMIUM-PLATED STEAM PIPE
39	MG092 MG360	WATER TRAY DRAIN BAGIN (1998 VERS.)
40	MG090 MG361	WATER TRAY GRID TRAY GRID
41	MG089 MG089	PAINTED FRAME PAINTED FRAME (1998 VERS.)
42	MG044 MG044/1 MG071 MG072	VIBRATION PUMP 230V MAINS MOD. VIBRATION PUMP 115V MAINS MOD. VIBRATION PUMP 230V RESERVOIR MOD VIBRATION PUMP 115V RESERVOIR MOD
43	MG077	115/230V FIXED PILOT LAMP
44	MG115	CHROMIUM-PLATED HOT WATER PIPE
45	MG158B	WATER PIPE FITTING NIPPLES
46	W491	I/O SWITCH
47	MG162 MG162	STAINLESS BUTTON PANEL STAINLESS BUTTON PANEL (1998 VERS.)
48	MG073	RED LIGHT SWITCH
49	MG074/2	TWO POLE RED PUSH BUTTON
50	MG225	VIBRATION-DAMPING ANGLE PLATE
51	MG091	SEPARATING PANEL
52	MG308	FILTER

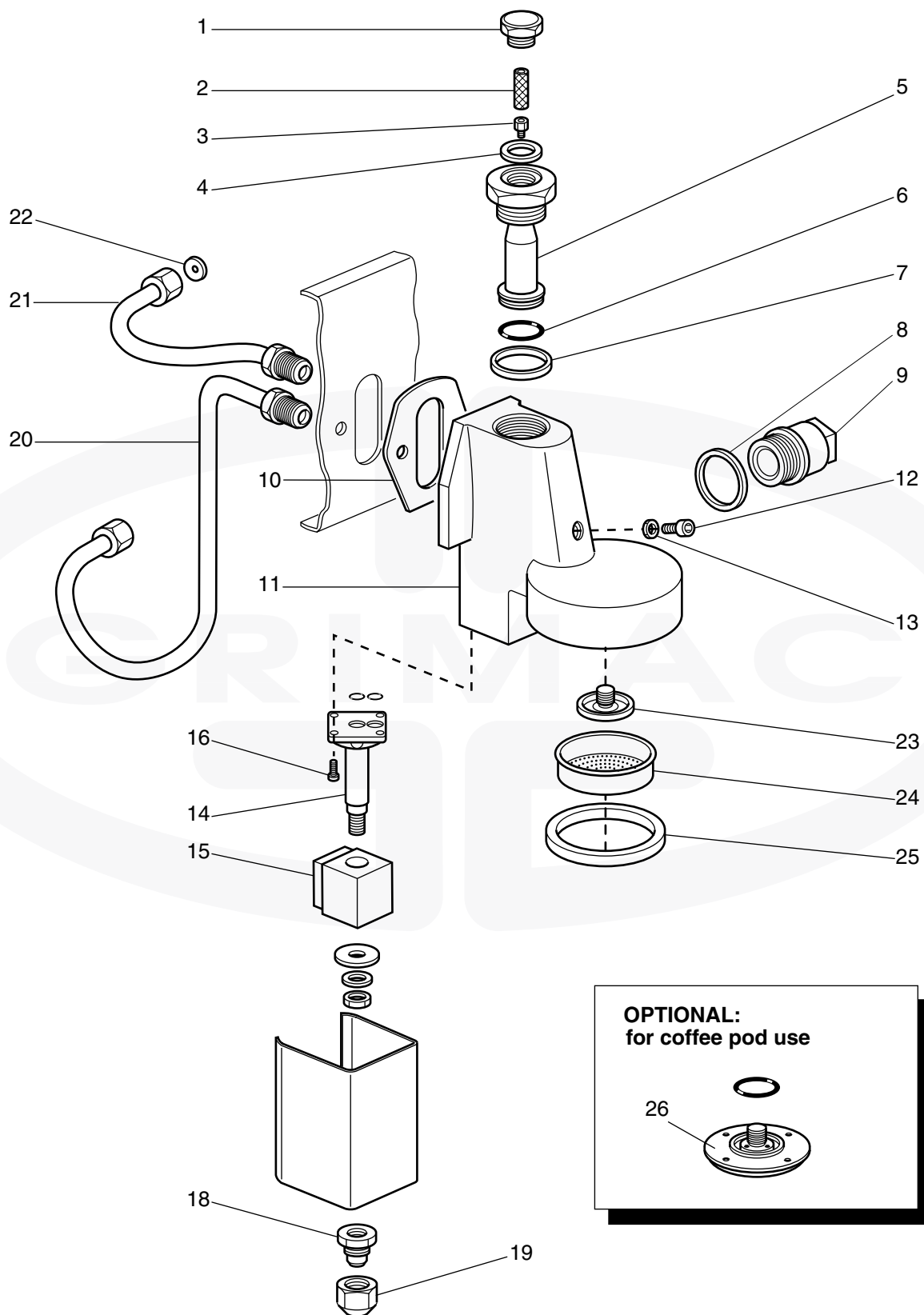


POS.	CODE	DESCRIPTION
1	V514R	3/8 BOILER VALVE
2	MG160	3/8 M-F-F UNION TEE
3	MG120UL	PRESSURE SWITCH
4	MG161	3/8 M - 1/4 F ADAPTER
5	MG287	1/4 UNION ELBOW
6	MG108	PRESSURE GAUGE-FITTING COPPER PIPE
7	MG136	1/4-1/4 M NIPPLES
8	F814	BOILER DEPRESSION 1/4" VALVE
9	MG108/1	STEAM VALVE PIPE
10	MG087B	MINI GRIMAC BOILER
11	W902 MG086	1300W 230V HEATING ELEMENT 1300W 115V HEATING ELEMENT
12	MG109	Ø 6 COPPER EXCHANGER PIPE
13	GR224	COPPER PIPE
14	MG154	1/4 M-M-M UNION TEE
15	MG152	85 mm COPPER INJECTOR PIPE
16	W591	1/2 LOWER UNION TEE
17	MG110	LOWER COPPER WATER OUTLET PIPE
18	MG137	1/8-1/8 M NIPPLES
19	V190 MG006	230V WATER OUTLET SOLENOID VALVE 115V WATER OUTLET SOLENOID VALVE
20	MG128	STEAM VALVE KNOB
21	MG032/1	STEAM VALVE COMPLETE
22	MG205	PRESSURE GAUGE-FASTENING CHECK NUT
23	MG157	Ø 42 PRESSURE GAUGE
24	MG068	1/8 M-F UNION TEE
25	MG114	UPPER WATER OUTLET PIPE
26	MG112	LONG EXCHANGER PIPE
27	MG111	SHORT EXCHANGER PIPE
28	W518	1/2 UPPER ELBOW PIPE FITTING
29	V072	LONG TYPE LEVEL PROBE
30	V072	SHORT TYPE LEVEL PROBE
31	CA020T	TEFLON GASKET

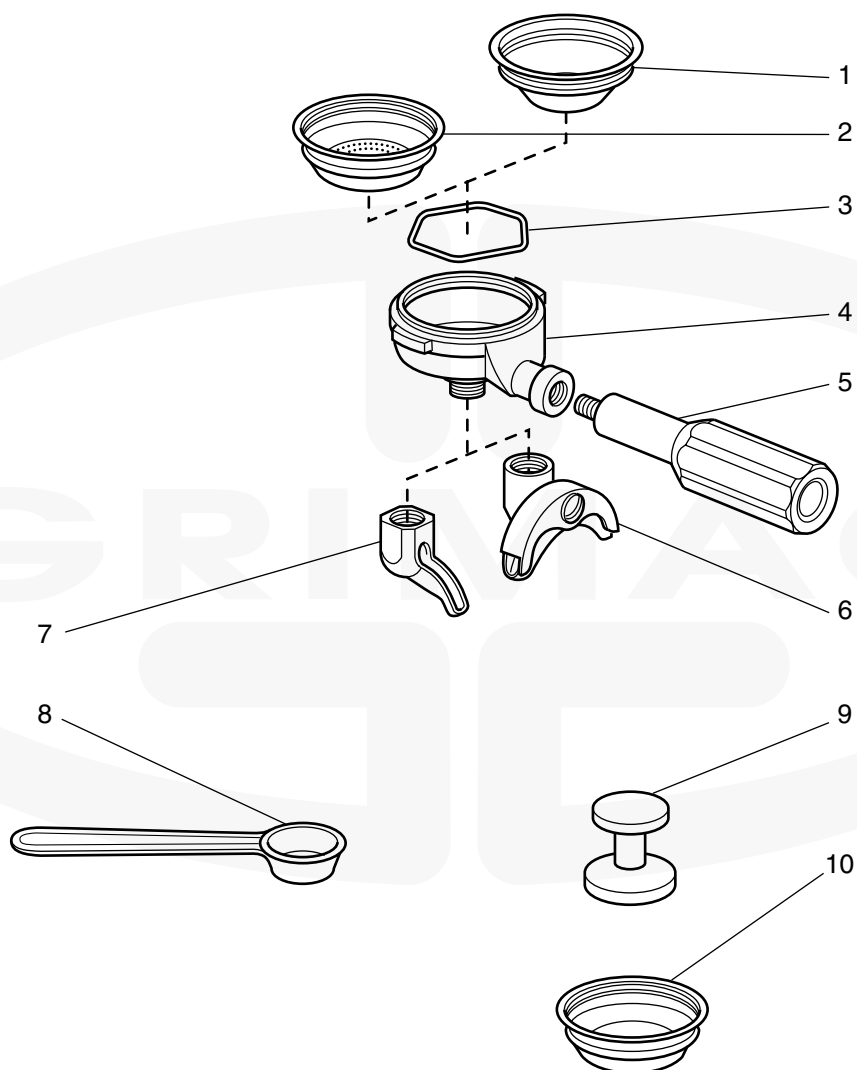


TAV. 1 27
TAV. 1a 26

POS.	CODE	DESCRIPTION
1	V514R	3/8 BOILER VALVE
2	MG160	3/8 M-F-F UNION TEE
3	MG161	3/8 M - 1/4 F ADAPTER
4	MG139	1/4 M-M UNION ELBOW
5	MG113	REGULATOR PIPE
6	V070UL	PRESSURE SWITCH
7	MG108	PRESSURE GAUGE-FITTING COPPER PIPE
8	MG136	1/4-1/4 M NIPPLES
9	F814	BOILER DEPRESSION 1/4" VALVE
10	MG108/1	STEAM VALVE PIPE
11	MG087B	MINI GRIMAC BOILER
12	CA020T	TEFLON GASKET
13	MG086	1300W 115V HEATING ELEMENT
14	MG109	Ø 6 COPPER EXCHANGER PIPE
15	GR224	COPPER PIPE
16	MG154	1/4 M-M-M UNION TEE
17	MG152	85 mm COPPER INJECTOR PIPE
18	W591	1/2 LOWER UNION TEE
19	MG110	LOWER COPPER WATER OUTLET PIPE
20	MG137	1/8-1/8 M NIPPLES
21	MG006	WATER OUTLET SOLENOID VALVE 115V
22	MG128	STEAM VALVE KNOB
23	MG032/1	STEAM VALVE COMPLETE
24	MG205	PRESSURE GAUGE-FASTENING CHECK NUT
25	MG157	Ø 42 PRESSURE GAUGE
26	MG068	1/8 M-F UNION TEE
27	MG114	UPPER WATER OUTLET PIPE
28	MG112	LONG EXCHANGER PIPE
29	MG111	SHORT EXCHANGER PIPE
30	W518	1/2 UPPER ELBOW PIPE FITTING
31	V072	SHORT TYPE LEVEL PROBE
32	MG309	1/4 CAP



POS.	CODE	DESCRIPTION
	GR500C	COMPLETE SOLENOID VALVE GROUP
1	GR713	GICLEUR CLOSING CAP
2	GR714	GICLEUR FILTER
3	GR715	Ø 8 D ELIVERY UNIT GICLEUR
4	GR716	UNIT CAP TEFLON SEAL
5	GR717	MUSHROOM GROUP
6	GR718	MUSHROOM HEAD GASKET
7	GR719	TEFLON MUSHROOM HEAD GASKET
8	GR719	TEFLON MUSHROOM HEAD GASKET
9	GR720	INFUSION DEVICE CAP
10	GR721	FIXING GROUP GASKET
11	Z119	DELIVERY UNIT
12	GR722	GROUP SCREW
13	GR723	COPPER GASKET
14	V533	SOLENOID VALVE BODY
15	GR724 GR772 GR175	230V COIL GROUP 3-WAY 230V SOLENOID VALVE ASSEMBLY ACCORDING UL 3-WAY 230V SOLENOID VALVE ASSEMBLY ACCORDING UL
16	MG080	SOLENOID VALVE FIXING SCREW
17	MG095	GUARD FOR SOLENOID VALVE COVER
18	GR725	UNIT JET DIVIDER
19	GR726	UNIT JET COVER
20	GR053 GR054 GR190 GR191	LOWER RIGHT-HAND PIPE LOWER LEFT-HAND PIPE LOWER RIGHT-HAND PIPE ACCORDING UL LOWER LEFT-HAND PIPE ACCORDING UL
21	GR045 GR046	UPPER RIGHT-HAND PIPE ACCORDING UL UPPER LEFT-HAND PIPE ACCORDING UL
22	GR727	THROTTLING DEVICE
23	GR762	UNIT DIFFUSER
24	GR761	UNIT SPRAY HEAD
25	GR763	RUBBER SEAL
26	MG218	POD USE ADAPTER



POS.	CODE	DESCRIPTION
1	GR764	1-CUP FILTER WITH RIM
2	GR765	2-CUPS FILTER WITH RIM
3	GR766	STOP FILTER SPRING
4	GR767	PORTAFILTER
5	MG179	PORTAFILTER KNOB
6	GR768	2-CUPS SPOUT
7	GR769	1-CUP SPOUT
8	V006/1 V006	PLASTIC DOSING SPOON STEEL DOSING SPOON
9	V012	BAKELITE PRESSER
10	GR770	SPRAY-WASH HEAD BLIND FILTER